

2020 Amendment  
to the  
Historic Preservation Plan  
Element of the Master Plan



# 2020 Amendment to the Historic Preservation Plan Element of the Master Plan

## 2020 PLANNING BOARD

Todd Cook Chairperson

Susan Englehardt, Vice-Chairperson

Brian Budney

Michael Campion

Jeffrey Doshna

Mayor Betsy Driver

Karen Giffen

Marc Hain

Councilman Jeremy Long

James Hill, Alternate 1

David Norton, Alternate 2

Secretary to the Planning Board – Eileen Parks

Planning Board Attorney – Kara Kaczynski, Esq. (McNally, Yaros, Kaczynski & Lime, LLC)

Planning Board Engineer – Robert J. Clerico, PE (Van Cleef Engineering Associates, LLC)

Planning Board Planner – Elizabeth McManus, PP, AICP, LEED AP (Kyle + McManus Associates)

Adopted by the Planning Board \_\_\_\_\_, 2020

Prepared by:



Elizabeth K. McManus, PP, AICP, LEED AP

New Jersey Professional Planning License No. 5915

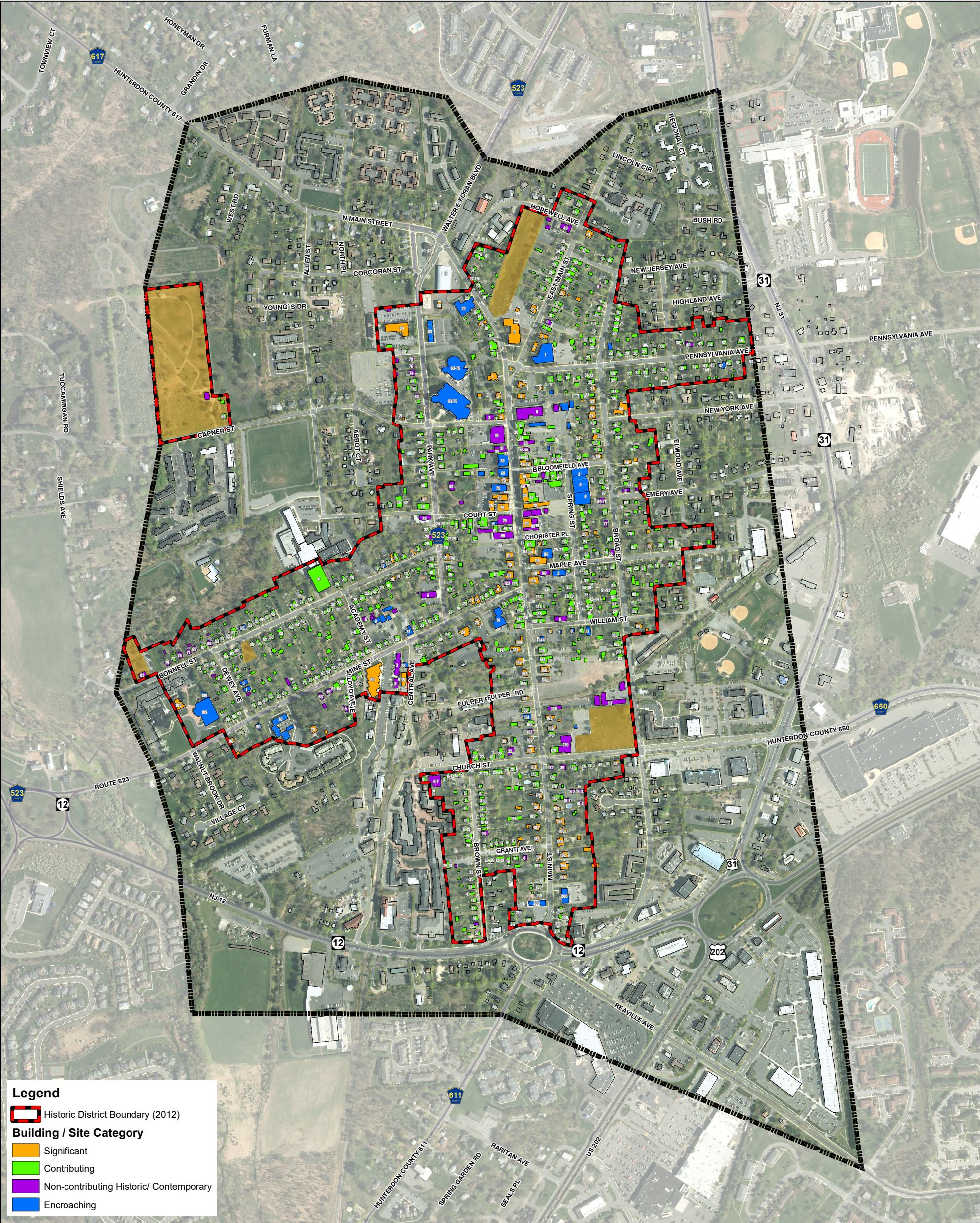


The *2010 Historic Preservation Plan Element* of the Master Plan, which was subsequently reexamined as part of the *2015 Master Plan Re-examination Report*, is amended to replace the Historic District map contained at the end of the Element. Since the 2010 adoption it has become apparent that the Historic District map and designations contained outdated, and in some cases, incorrect information and was in need of additional information on the period of significance. In order to address these concerns, the Flemington Borough Historic Preservation Commission inspected all properties in and around the Historic District and reviewed historic data to confirm the period of significance.

The “Flemington Historic District” map, and the designations depicted therein on the following page replaces the “Historic District” map contained in the *2010 Historic Preservation Plan Element of the Master Plan*. Using the clear Period of Significance of 1712 to 1935 as well as more accurate research and assessment, the map revises the status of 18 properties currently within the Historic District from “Contributing” to “Significant” (to reflect the significance of their architecture and/or their history; these reclassifications include two cemeteries already in the District); upgrades one property’s designation from “Encroaching” to “Non-contributing Historic/ Contemporary” (to better reflect its character); and downgrades one property’s designation from “Contributing” to “Non-Contributing” (because it was constructed after 1935). These designation changes will more accurately acknowledge architecturally and historically significant buildings and sites, etc., that are currently within the District.

The Period of Significance, from 1712 to 1935, was confirmed with research using historic maps and aerials. This research confirmed that the bulk of development occurred from the 18th century (specifically, the beginning of European settlement in 1712) through the start of the Great Depression, with a gap in development occurring from the mid-1930’s to the end of WWII. This pattern of development provides a clear Period of Significance, using the internationally renowned Lindbergh Kidnapping Trial in 1934-1935 as the end date.





**Legend**

Historic District Boundary (2012)

**Building / Site Category**

Significant

Contributing

Non-contributing Historic/ Contemporary

Encroaching



Clarke Caton Hintz

● ● ■

Architecture  
Planning  
Landscape Architecture

# Flemington Historic District

LOCATION:  
Flemington Borough, Hunterdon County, NJ

DATE:  
Revised: June 2020