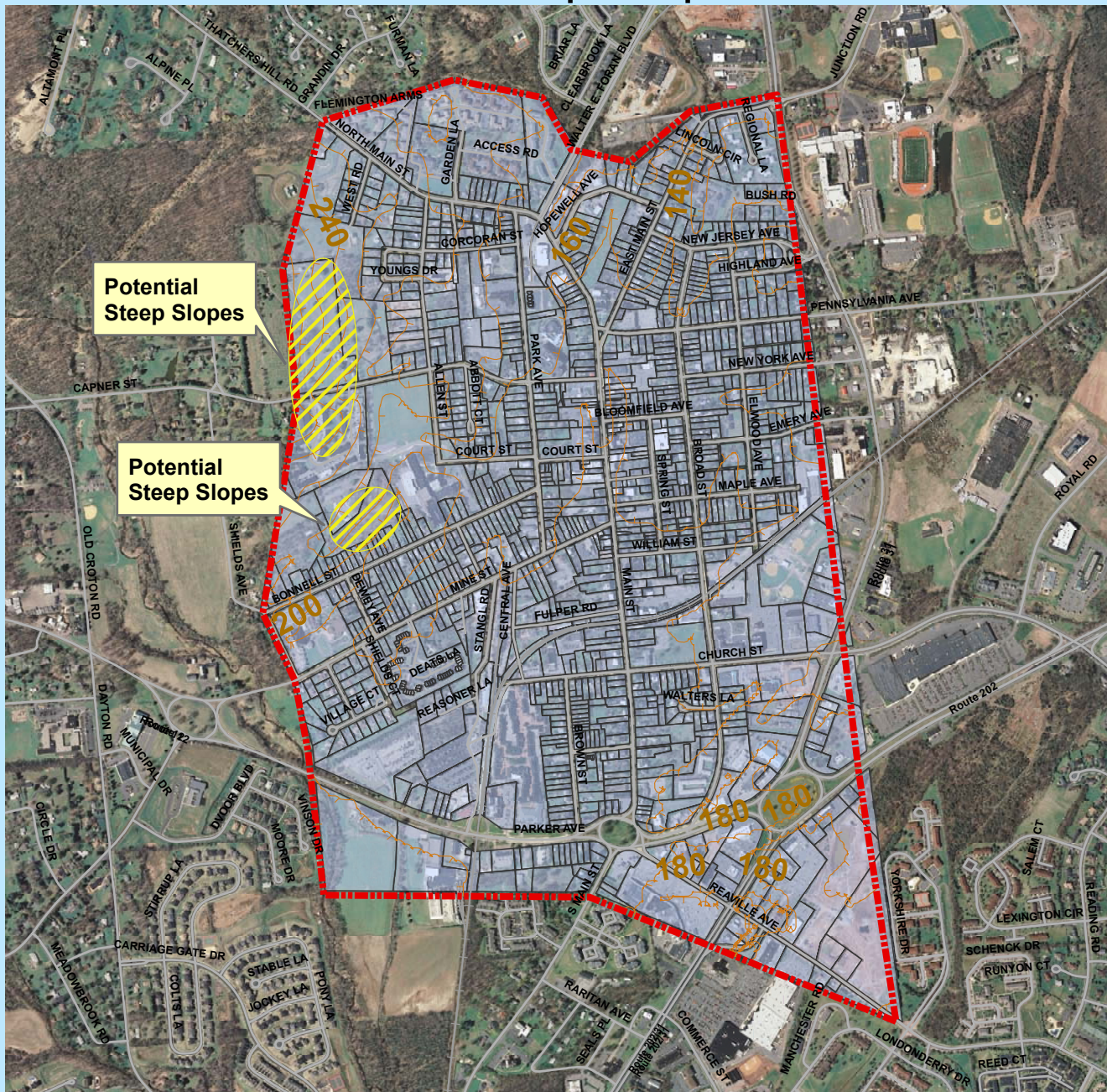







Map 6 - Flemington Borough Topography & Steep Slopes



0 750 1,500 3,000 Feet

Key to Features

-  Municipal Boundary
-  Contours_20FT_10M
-  Roads
-  RailRoads
-  Flemington Parcels

Prepared By: Flemington Borough Environmental Commission
February 2010

Sources:

- Hunterdon County Division of GIS
- NJDEP GIS Data

Base Photographs:

2007 NJ High Resolution Orthoimagry

Plate Nos. E8D12, E8D16, F8C9, F8C10, F8C13, F8C14

