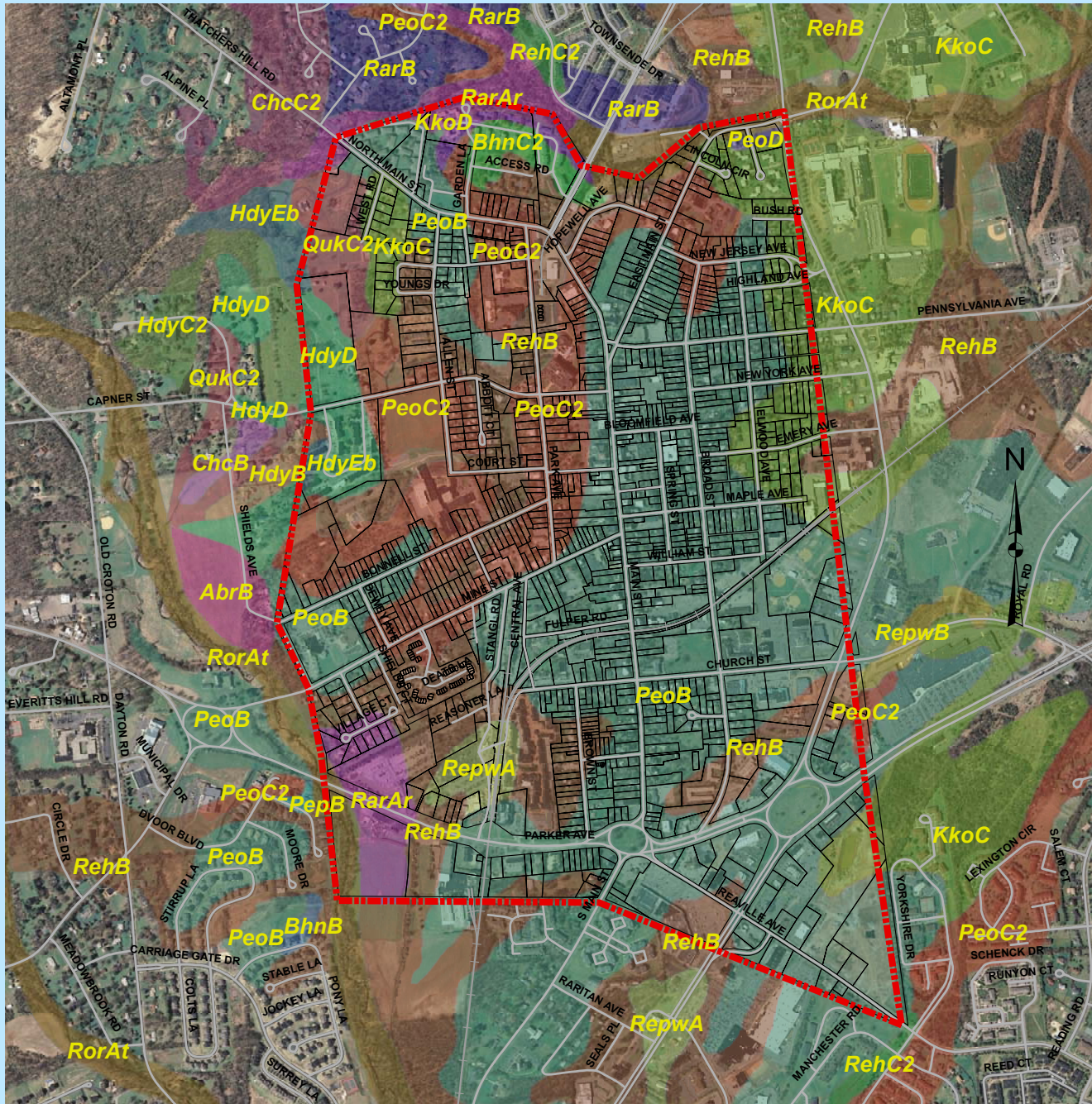


Map 5 - Flemington Borough Soils



0 750 1,500 3,000 Feet

Key to Features

- Municipal Boundary
- Roads
- Railroads
- Flemington Parcels

Soils (SSURGO)

MUNAME

- Abbottstown silt loam, 2 to 6 percent slopes (AbrB)
- Birdsboro silt loam, 2 to 6 percent slopes (BhnB)
- Birdsboro silt loam, 6 to 12 percent slopes, eroded (BhnC2)
- Chalfont silt loam, 2 to 6 percent slopes (ChcB)
- Chalfont silt loam, 6 to 12 percent slopes, eroded (ChcC2)
- Hazleton channery loam, 12 to 18 percent slopes (HdyD)
- Hazleton channery loam, 18 to 40 percent slopes, very stony (HdyEb)
- Hazleton channery loam, 2 to 6 percent slopes (HdyB)
- Hazleton channery loam, 6 to 12 percent slopes, eroded (HdyC2)

- Klinesville channery loam, 12 to 18 percent slopes (KkoD)
- Klinesville channery loam, 6 to 12 percent slopes (KkoC)
- Penn channery silt loam, 12 to 18 percent slopes (PeoD)
- Penn channery silt loam, 2 to 6 percent slopes (PeoB)
- Penn channery silt loam, 6 to 12 percent slopes, eroded (PeoC2)
- Penn-Bucks complex, 2 to 6 percent slopes (PebB)
- Quakertown silt loam, 6 to 12 percent slopes, eroded (QuKc2)
- Raritan silt loam, 0 to 3 percent slopes, rarely flooded (RarAr)
- Raritan silt loam, 3 to 8 percent slopes (RarB)
- Reaville silt loam, 2 to 6 percent slopes (RehB)
- Reaville silt loam, 6 to 12 percent slopes, eroded (RehC2)
- Reaville wet variant silt loam, 0 to 2 percent slopes (RepwA)
- Reaville wet variant silt loam, 2 to 6 percent slopes (RepwB)
- Rowland silt loam, 0 to 2 percent slopes, frequently flooded (RorAt)

Prepared By: Flemington Borough
Environmental Commission
February 2010

Sources:
- Hunterdon County Division of GIS
- NJDEP GIS Data